

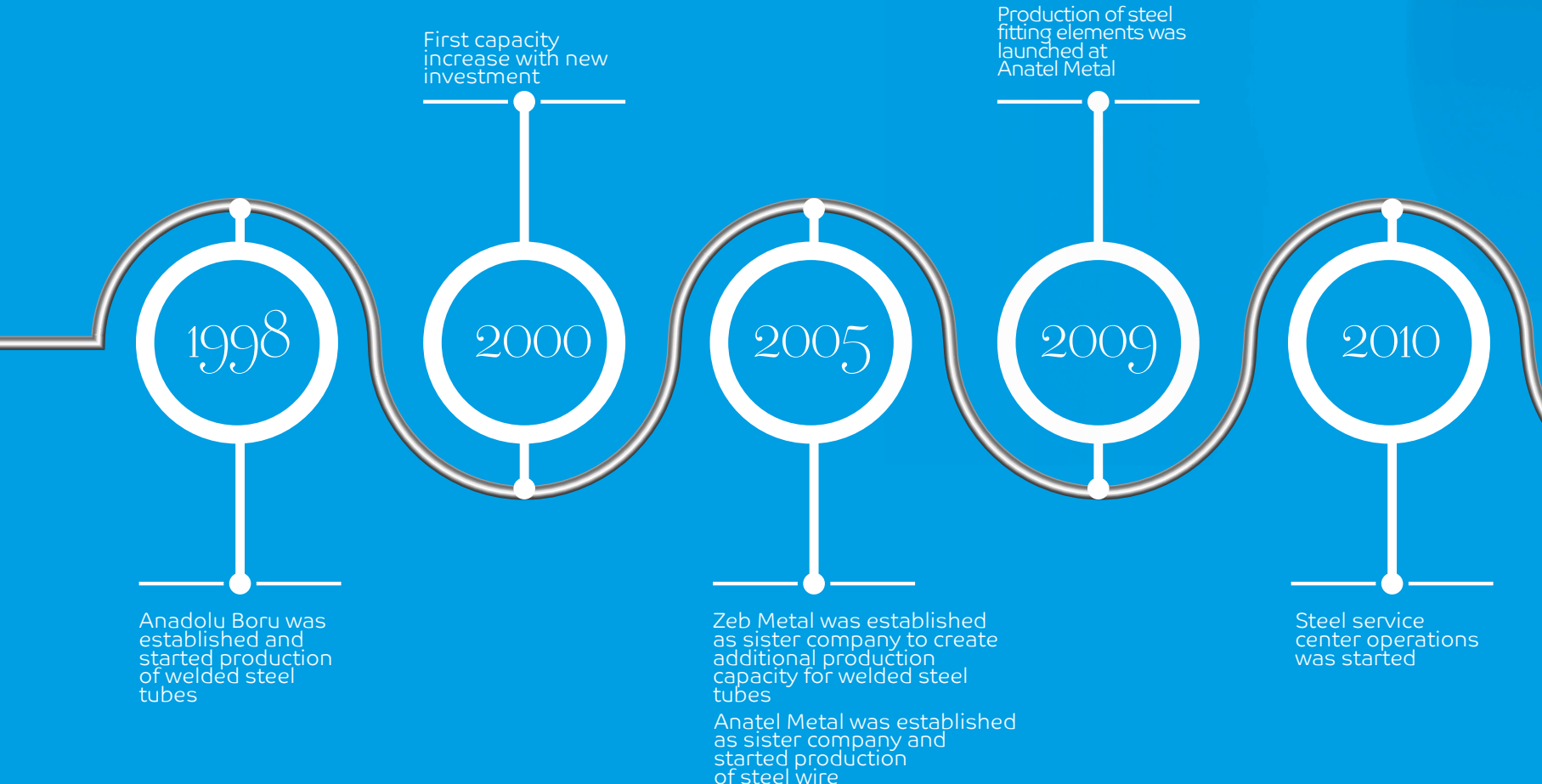
AnadoluBoru

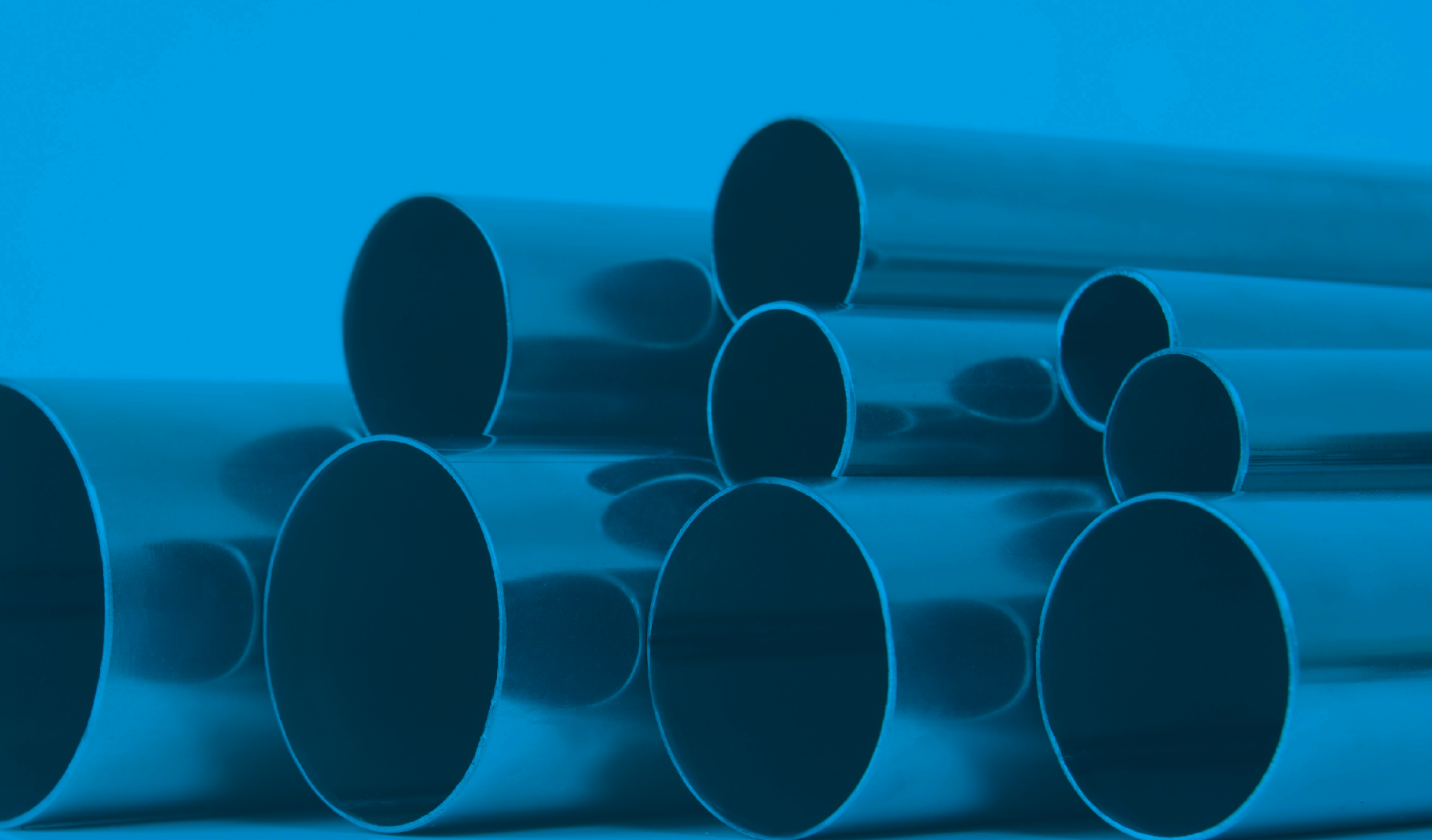


AnadoluBoru

Anadolu Boru was established in 1998 and started its operations in production of welded steel tubes. Focusing on manufacturing of welded steel tubes from cold rolled steel for precision applications; Anadolu Boru supplies its products to various industries, including furniture, housewares, automotive, household appliances and metal fabrication.

Combining its welded tube production with steel service center products, Anadolu Boru continues its operations in Kayseri city of Turkey over a 30.000 m² area 10.000 m² of which is covered. With its experienced team, annual production capacity of 75.000 tons and customer oriented production approach, Anadolu Boru will continue to be a reputable supplier for the industry.





Welded steel tube production capacity was increased with additional investment



Started high strength tube production at Anatel Metal



Capacity increase in production of steel wire at Anatel Metal and production of pocket springs at Zeb Metal



Welded steel tube production capacity of Zeb Metal was increased

Launched production of pocket springs from steel wire at Zeb Metal





ANADOLU BORU & GROUP COMPANIES

Anadolu Boru, with its subsidiaries Anatel Metal and Zeb Metal, has been a significant supplier to furniture, housewares, metal fabrication and other various industries since 1998 Anadolu Boru and its group companies are serving many reputable domestic and international brands offering the following product groups.

- Welded steel tubes
- High strength steel tubes
- Steel sheet and strip
- Cold drawn steel wire with bright and normal surface
- High carbon grade steel wire
- Furniture fitting elements
- Pocket spring systems

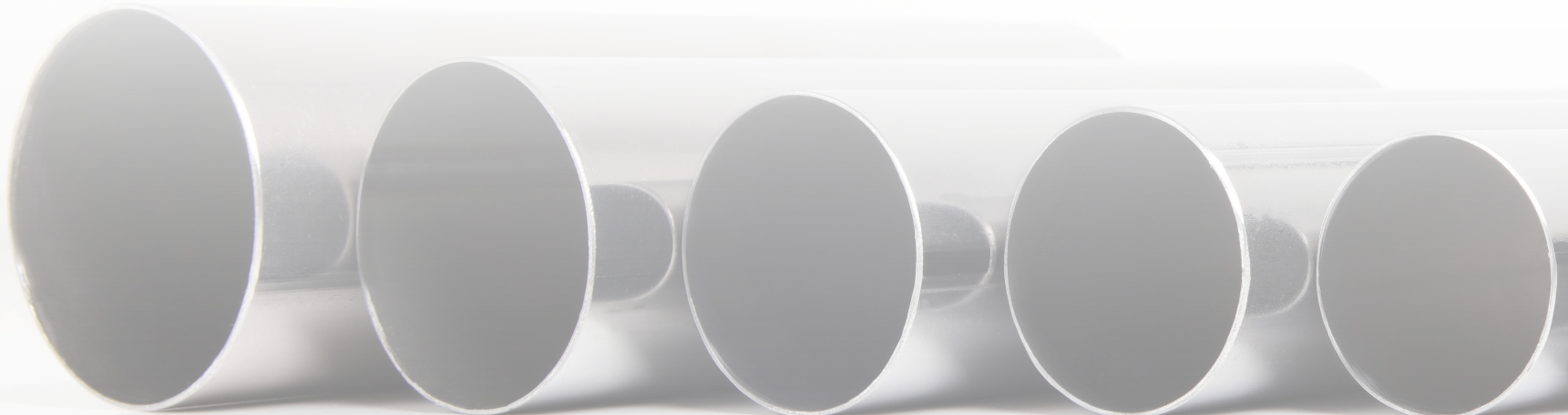
Anadolu Boru manufactures round tubes as per TS EN 10305-3 standards for precision applications.

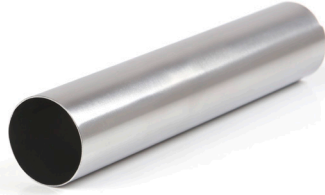
Anadolu Boru produces round tubes from specific cold rolled steel grades, with reduced dimensional tolerances and detailed control of production parameters; resulting in product suitability for further mechanical processes such as bending, expanding, reduction and forming and high surface quality suitable for further surface operations including electrostatic painting, polishing and coating processes.

PRODUCTION RANGE	
Outside Diameter (mm)	ø10 - ø63,5
Wall thickness (mm)	0,40 - 2,00
Length (mm)	2800 - 8000


STEEL GRADE, DELIVERY AND SURFACE CONDITIONS (TS EN 10305-3)	
Delivery condition	+CR1, +CR2
Surface condition	S3, S2
Steel grades for +CR1 delivery condition *	E155, E195, E235
Steel grades for +CR2 delivery condition *	E320, E370

*Please get in contact with us for other steel grades.





Outside diameter and Wall thickness (mm)	PRODUCTION RANGE OF ROUND TUBES (TS EN 10305-3)									
	0,40	0,50	0,60	0,70	0,80	0,90	1,00	1,20	1,50 CR	2,00 CR
Ø10										
Ø12										
Ø13										
Ø14										
Ø16										
Ø19										
Ø21										
Ø22										
Ø25										
Ø25,4										
Ø28										
Ø28,6										
Ø32										
Ø38										
Ø42										
Ø45										
Ø51										
Ø60										
Ø63,5										

 Standard products that we produce.

Note: Please get in contact with us for sizes that are not mentioned above.



Anadolu Boru manufactures square welded tubes as per TS EN 10305-5 standards.

Square tubes produced by Anadolu Boru have widely been processed in various applications in different sectors including furniture, office furniture, housewares, construction, machinery and automotive industries. Anadolu Boru offers high quality service for its square tube products from cold rolled steel with its wide range of production and stock availability.

PRODUCTION RANGE	
Cross section (mm)	10x10 - 50x50
Wall thickness (mm)	0,40 - 2,00
Length (mm)	2800 - 8000


STEEL GRADE, DELIVERY AND SURFACE CONDITIONS (TS EN 10305-5)	
Delivery condition	+CR1, +CR2
Surface condition	S3, S2
Steel grades for +CR1 delivery condition *	E155, E195, E235
Steel grades for +CR2 delivery condition*	E320, E370

*Please get in contact with us for other steel grades.

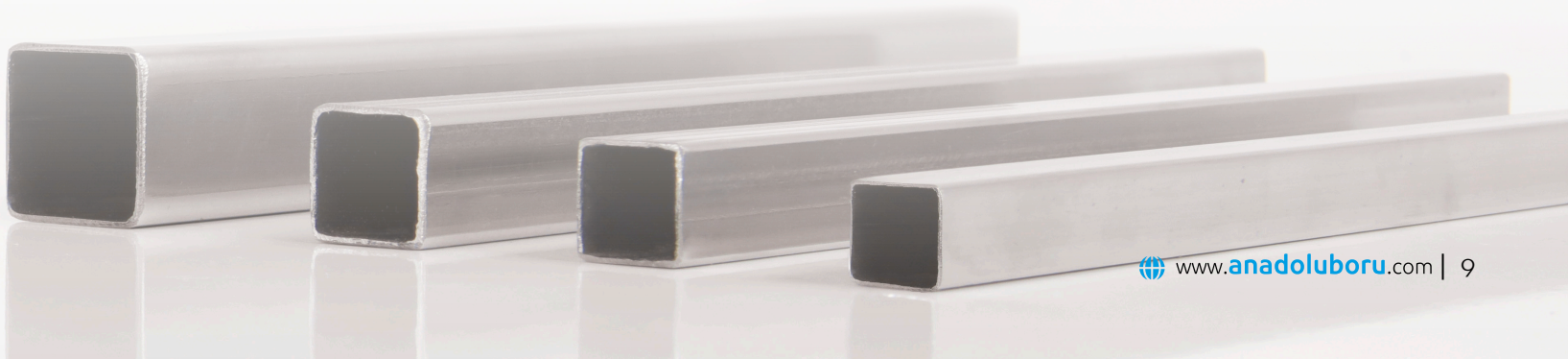




Cross section and Wall thickness (mm)	PRODUCTION RANGE OF SQUARE TUBES (TS EN 10305-5)									
	0,40	0,50	0,60	0,70	0,80	0,90	1,00	1,20	1,50 CR	2,00 CR
10x10	Standard	Standard	Standard	Standard	Standard	Standard	Standard	Standard	Standard	Standard
12,7x12,7	Standard	Standard	Standard	Standard	Standard	Standard	Standard	Standard	Standard	Standard
15x15	Standard	Standard	Standard	Standard	Standard	Standard	Standard	Standard	Standard	Standard
16x16	Standard	Standard	Standard	Standard	Standard	Standard	Standard	Standard	Standard	Standard
20x20	Standard	Standard	Standard	Standard	Standard	Standard	Standard	Standard	Standard	Standard
25x25	Standard	Standard	Standard	Standard	Standard	Standard	Standard	Standard	Standard	Standard
30x30	Standard	Standard	Standard	Standard	Standard	Standard	Standard	Standard	Standard	Standard
35x35	Standard	Standard	Standard	Standard	Standard	Standard	Standard	Standard	Standard	Standard
40x40	Standard	Standard	Standard	Standard	Standard	Standard	Standard	Standard	Standard	Standard
50x50	Standard	Standard	Standard	Standard	Standard	Standard	Standard	Standard	Standard	Standard

 Standard products that we produce.

Note: Please get in contact with us for sizes that are not mentioned above





AnadoluBoru

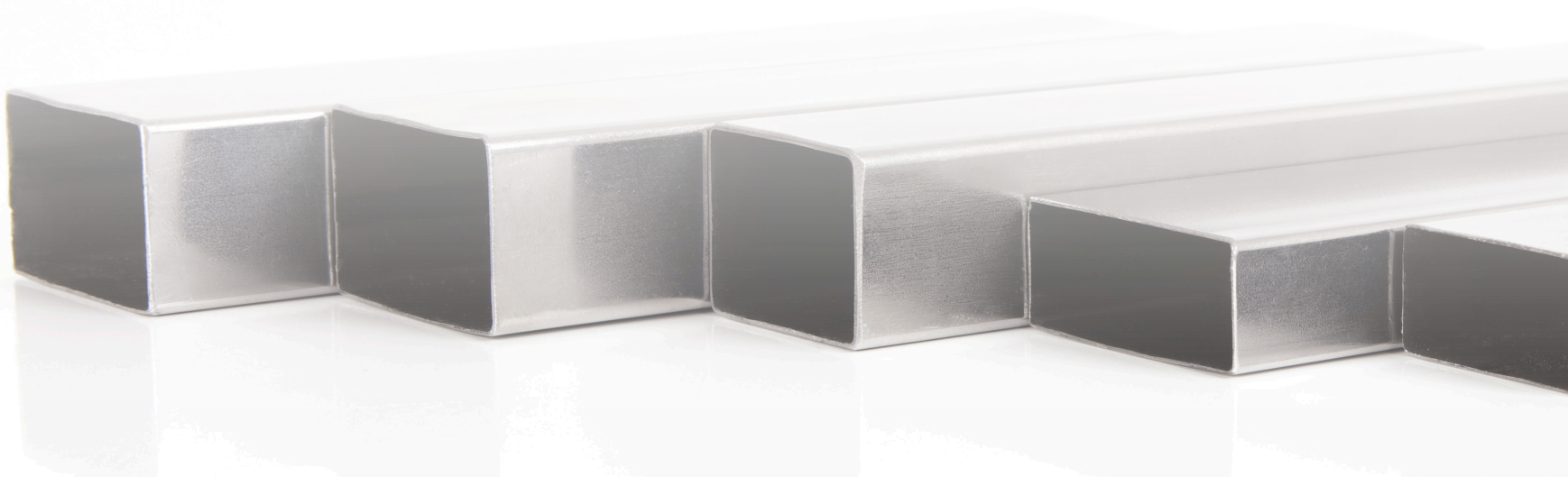
RECTANGULAR TUBES

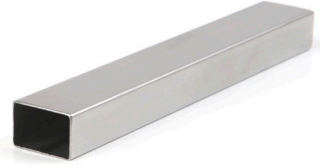
Anadolu Boru manufactures rectangular tubes as per TS EN 10305-5 standards for different industries including metal housewares, furniture and household appliances. Anadolu Boru is a significant industrial supplier for rectangular tubes from cold rolled steel with its wide variety of products and fast delivery capability.

PRODUCTION RANGE	
Cross section (mm)	10x15 - 40x60
Wall thickness (mm)	0,40 - 2,00
Length (mm)	2800 - 8000


STEEL GRADE, DELIVERY AND SURFACE CONDITIONS (TS EN 10305-5)	
Delivery condition	+CR1, +CR2
Surface condition	S3, S2
Steel grades for +CR1 delivery condition*	E155, E195, E235
Steel grades for +CR2 delivery condition*	E320, E370

*Please get in contact with us for other steel grades.





Cross section and Wall thickness (mm)			PRODUCTION RANGE OF RECTANGULAR TUBES (TS EN 10305-5)									
			0,40	0,50	0,60	0,70	0,80	0,90	1,00	1,20	1,50 CR	2,00 CR
10x20												
15x20												
15x25	10x30											
15x30	20x25											
20x30												
20x40												
30x40	20x50											
30x50	20x60	15x65										
40x60												

 Standard products that we produce.

Note: Please get in contact with us for sizes that are not mentioned above





AnadoluBoru

SPECIAL CROSS SECTION TUBES

Anadolu Boru manufactures special cross section tubes such as flat oval, D, polygonal, elliptical and other different sections for precision applications within TS EN 10305-3 standards, option 10.

With their high performance in various mechanical processes, suitability for surface coating operations and aesthetics appearances, special cross section tubes produced by Anadolu Boru have widely been selected in designs of end products in various sectors including furniture, housewares, office furniture and household appliances industries.

PRODUCTION RANGE	
Wall thickness (mm)	0,40 - 2,00
Length (mm)	2800 - 8000


STEEL GRADE, DELIVERY AND SURFACE CONDITIONS (TS EN 10305-5)	
Delivery condition	+CR1, +CR2
Surface condition	S3, S2
Steel grades for +CR1 delivery condition*	E155, E195, E235
Steel grades for +CR2 delivery condition*	E320, E370

*Please get in contact with us for other steel grades.





Cross section and Wall thickness (mm)		PRODUCTION RANGE OF SPECIAL CROSS SECTION TUBES (TS EN 10305-3)									
		0,40	0,50	0,60	0,70	0,80	0,90	1,00	1,20	1,50 CR	2,00 CR
FLAT OVAL	10x20										
FLAT OVAL	14x24										
FLAT OVAL	15x30										
FLAT OVAL	10x39										
FLAT OVAL	20x32										
FLAT OVAL	20x35										
FLAT OVAL	16x40										
FLAT OVAL	21x38										
FLAT OVAL	20x40										
FLAT OVAL	21x47										
FLAT OVAL	25x50										
FLAT OVAL	20x60										
FLAT OVAL	32x50										
D LADDER	34x76										
V LADDER	34x78										
D PROFILE	10x20										
D PROFILE	18x25										
D PROFILE	30x40										
OCTAGONAL	ø21										
T TRIANGLE	15x50x60										

 Standard products that we produce

Note: Please get in contact with us for sizes that are not mentioned above





AnadoluBoru

GALVANIZED TUBES

Anadolu Boru manufactures round and rectangular tubes from galvanized steel with S4 surface condition as per TS EN 10305-3 and TS EN 10305-5 standards.

Galvanized tubes produced by Anadolu Boru from cold formable galvanized steel grades have widely been preferred by various industrial applications including household appliances, outdoor furniture, greenhouse applications, tent systems, bicycle and park equipment with their mechanical formability and resistance against corrosion.

PRODUCTION RANGE	
Wall thickness (mm)	0,40 - 2,00
Length (mm)	2800 - 8000
Outside diameter range for round tubes (mm)	ø13 - ø63,5
Range of cross section for square tubes (mm)	10x10 - 50x50
Range of cross section for rectangular tubes (mm)	10x15 - 40x60
Surface condition as per TS EN 10305-3	S4 (applied on strip surface)
Strip grade as per EN 10346*	DX51D+Z, DX52D+Z, DX53D+Z, DX54D+Z
Coating as per EN 10346*	Z80, Z100, Z140, Z200, Z225, Z275

*Please get in contact with us for different steel grades and coating thicknesses.



STEEL SHEET AND STRIP

Anadolu Boru offers steel service center services with the slitting and cut to length lines in its machinery park.

Steel sheet and strips produced from cold rolled steel have widely been used in various industries such as, metal housewares, household appliances, office furniture and steel door.

PRODUCTION RANGE	
Wall thickness (mm)	0,30 - 2,00
Range of strip width (mm)	25 - 1400
Range of sheet width (mm)	120 - 1400
Range of sheet length (mm)	200 - 2500
Steel grades as per EN 10130*	DC01, DC03, DC04

*Please get in contact with us for other steel grades.




ANADOLU BORU
 PLAKA CR 0,50 540 1080 DC01
 Geni : 1080 mm
 Kalınlık : 0,50 mm
 Ürün No : A20M174152
 Sipariş : 27
 Teslim Tarihi : 14.08.2020 19:34
 YILDIZ NİĞDE İSTİFA SAN. TİC. LTD. ŞTİ.
 A20M174152
 Adres : 40600. Yaka 25. Km Kayseri
 Tel : 352 381 1020 Fax : 352 381 1017
 www.anadoluboru.com info@anadoluboru.com

Summary of chemical analysis and mechanical properties of the tubes that we manufacture and the steel grades used in production is given below as per related production standards.

STEEL COMPOSITION AND MECHANICAL PROPERTIES AT +CR1 DELIVERY CONDITION AS PER EN 10305-3 AND EN 10305-5							
STEEL GRADE	MIN. TENSILE STRENGTH AT +CR1 DELIVERY CONDITION, R_m (N/mm ²)	MIN % ELONGATION AT +CR1 DELIVERY CONDITION, A	CHEMICAL COMPOSITION (MAX. %)				
			C	Si	Mn	P	S
E155	290	15	0,11	0,35	0,70	0,025	0,025
E195	330	8	0,15	0,35	0,70	0,025	0,025
E235	390	7	0,17	0,35	1,20	0,025	0,025

STEEL COMPOSITION AND MECHANICAL PROPERTIES AT +CR2 DELIVERY CONDITION AS PER EN 10305-3 AND EN 10305-5								
STEEL GRADE	MIN. TENSILE STRENGTH AT +CR2 DELIVERY CONDITION, R_m (N/mm ²)	MIN. TENSILE STRENGTH AT +CR2 DELIVERY CONDITION, R_e (N/mm ²)	MIN % ELONGATION AT +CR2 DELIVERY CONDITION, A	CHEMICAL COMPOSITION (MAX. %)				
				C	Si	Mn	P	S
E320	410	320	19	0,20	0,35	1,40	0,025	0,025
E370	450	370	15	0,21	0,55	1,60	0,025	0,025

COLD ROLLED STEELS AS PER EN 10130								
STEEL GRADE	YIELD STRENGTH, R_e (N/mm ²)	TENSILE STRENGTH, R_m (N/mm ²)	MIN. % ELONGATION, A	CHEMICAL COMPOSITION (MAX. %)				
				C	P	S	Mn	Ti
DC 01	280	270 - 410	28	0,12	0,045	0,045	0,60	-
DC 03	240	270 - 370	34	0,10	0,035	0,035	0,45	-
DC 04	210	270 - 350	38	0,08	0,030	0,030	0,30	-

HIGH STRENGTH LOW ALLOY STEELS AS PER EN 10268											
STEEL GRADE	LONGITUDINAL MIN. TENSILE STRENGTH, R_m (N/mm ²)	LONGITUDINAL MIN. YIELD STRENGTH AT HIGH TEMPERATURE, $R_{p0.2}$ (N/mm ²)	LONGITUDINAL MIN. % ELONGATION, A	CHEMICAL COMPOSITION (MAX. %)							
				C	Si	Mn	P	S	Al	Ti	Nb
H340LA	400 - 500	320 - 410	22	0,10	0,5	1,00	0,025	0,025	0,015	0,15	0,09
H380LA	430 - 550	360 - 460	20	0,10	0,5	1,40	0,025	0,025	0,015	0,15	0,09

COLD FORMABLE GALVANIZED STEELS AS PER EN 10346									
STEEL GRADE AND COATING	YIELD STRENGTH, R_e (N/mm ²)	TENSILE STRENGTH, R_m (N/mm ²)	MIN. % ELONGATION, A	CHEMICAL COMPOSITION (MAX. %)					
				C	Si	Mn	P	S	Ti
DX51D+Z	-	270 - 500	22	0,18	0,50	1,20	0,12	0,045	0,30
DX52D+Z	140 - 300	270 - 420	26	0,12	0,50	0,60	0,10	0,045	0,30
DX53D+Z	140 - 260	270 - 380	30	0,12	0,50	0,60	0,10	0,045	0,30
DX54D+Z	120 - 220	270 - 350	36	0,12	0,50	0,60	0,10	0,045	0,30



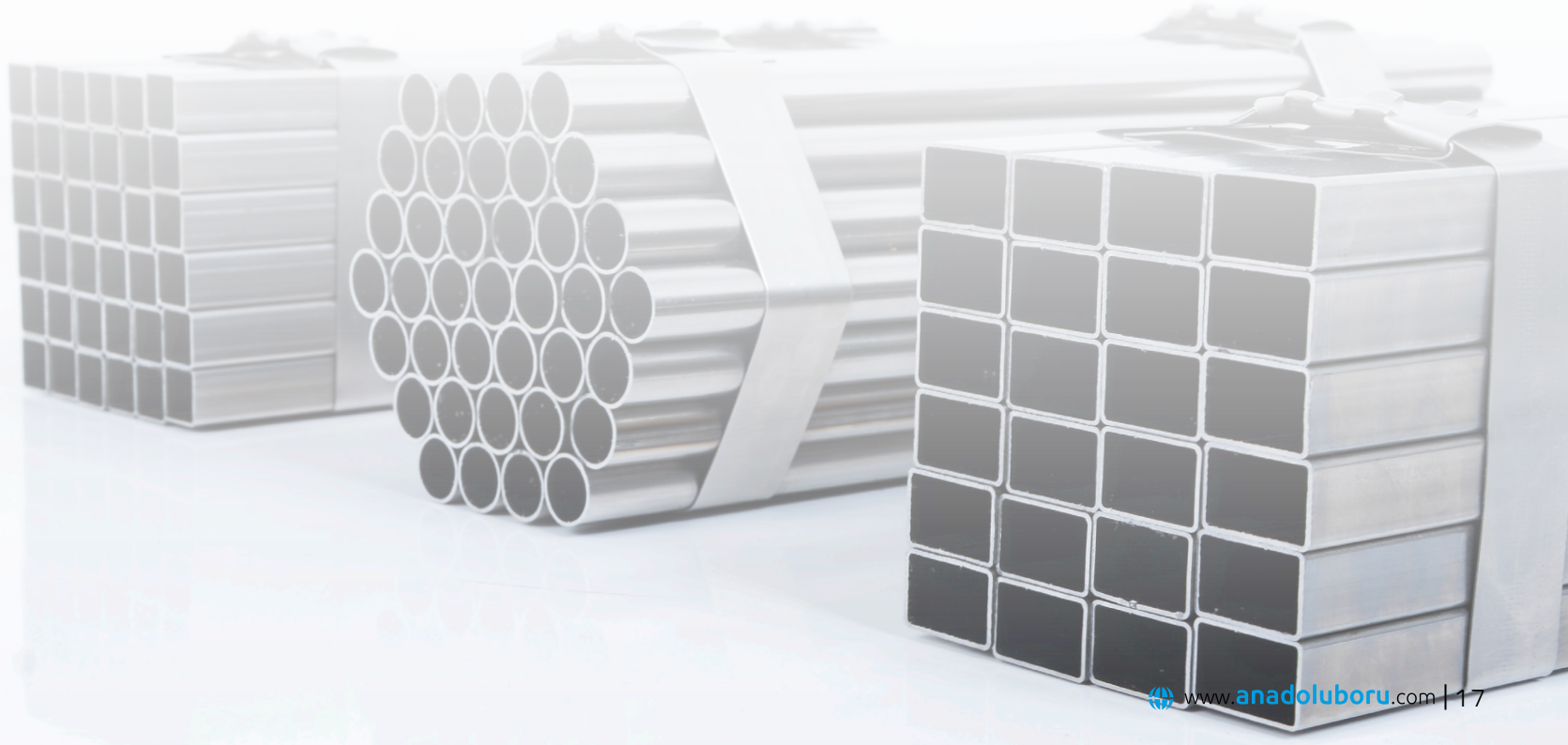
TUBE QUANTITIES IN BUNDLES

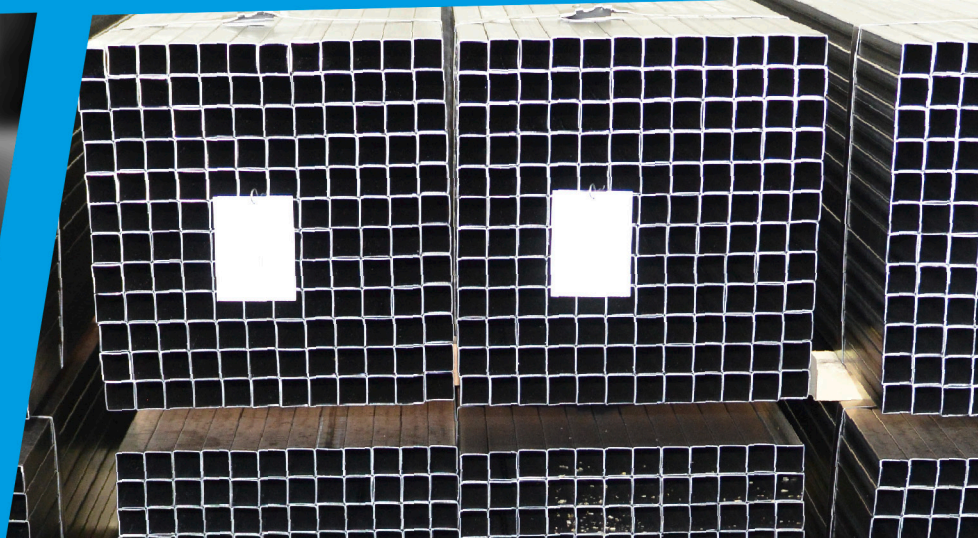
ROUND TUBES	
DIMENSIONS (mm)	PIECES PER BUNDLE
Ø10	500
Ø12	331
Ø13	331
Ø14	331
Ø16	331
Ø19	271
Ø21	217
Ø22	217
Ø25	169
Ø25,4	169
Ø28	169
Ø28,6	169
Ø32	127
Ø38	91
Ø42	91
Ø45	61
Ø51	61
Ø60	61
Ø63,5	61

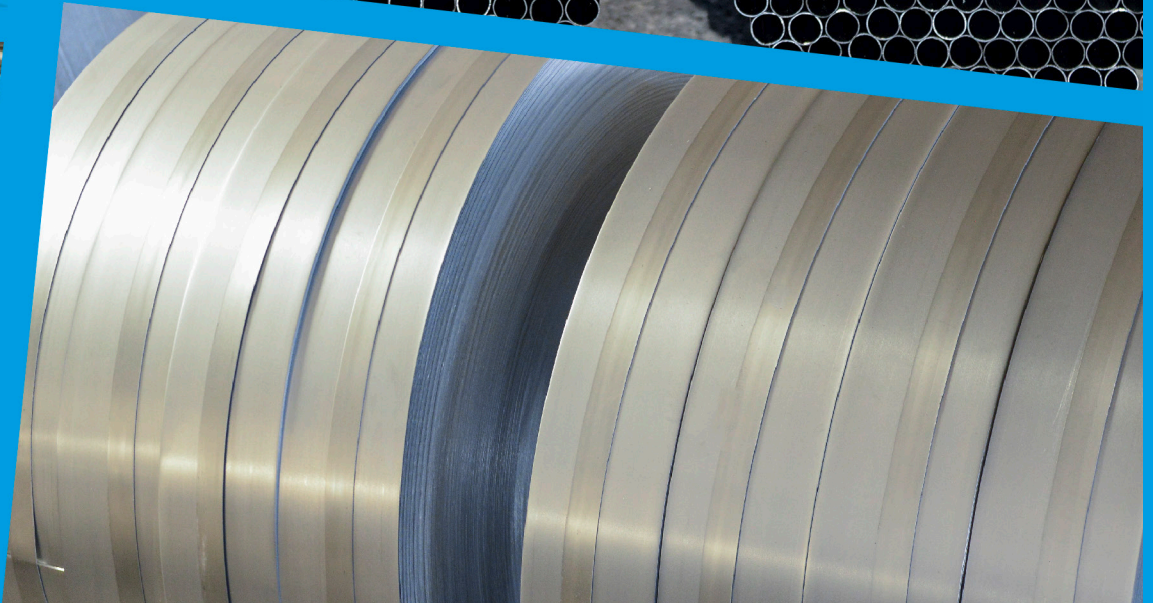
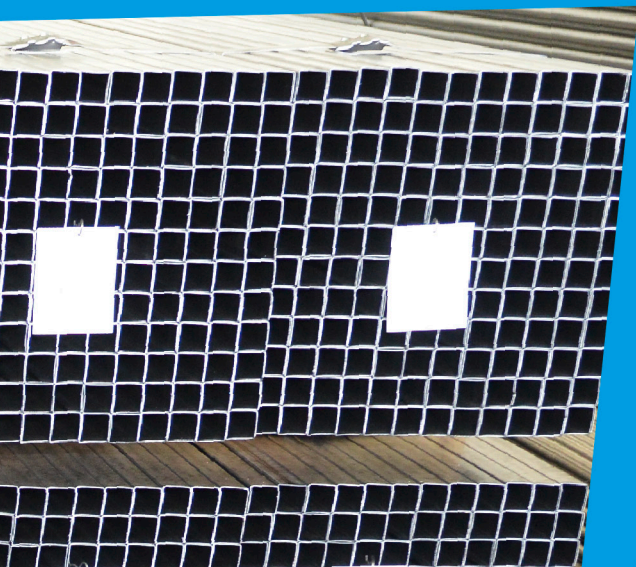
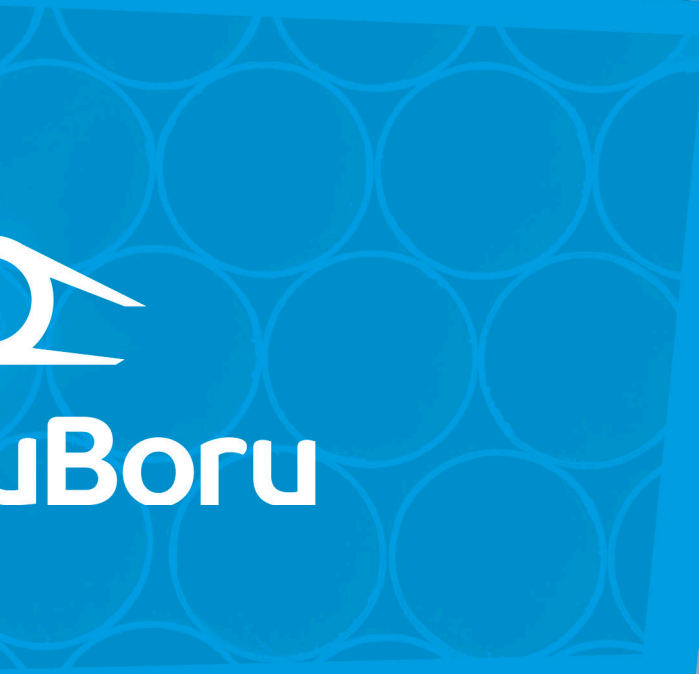
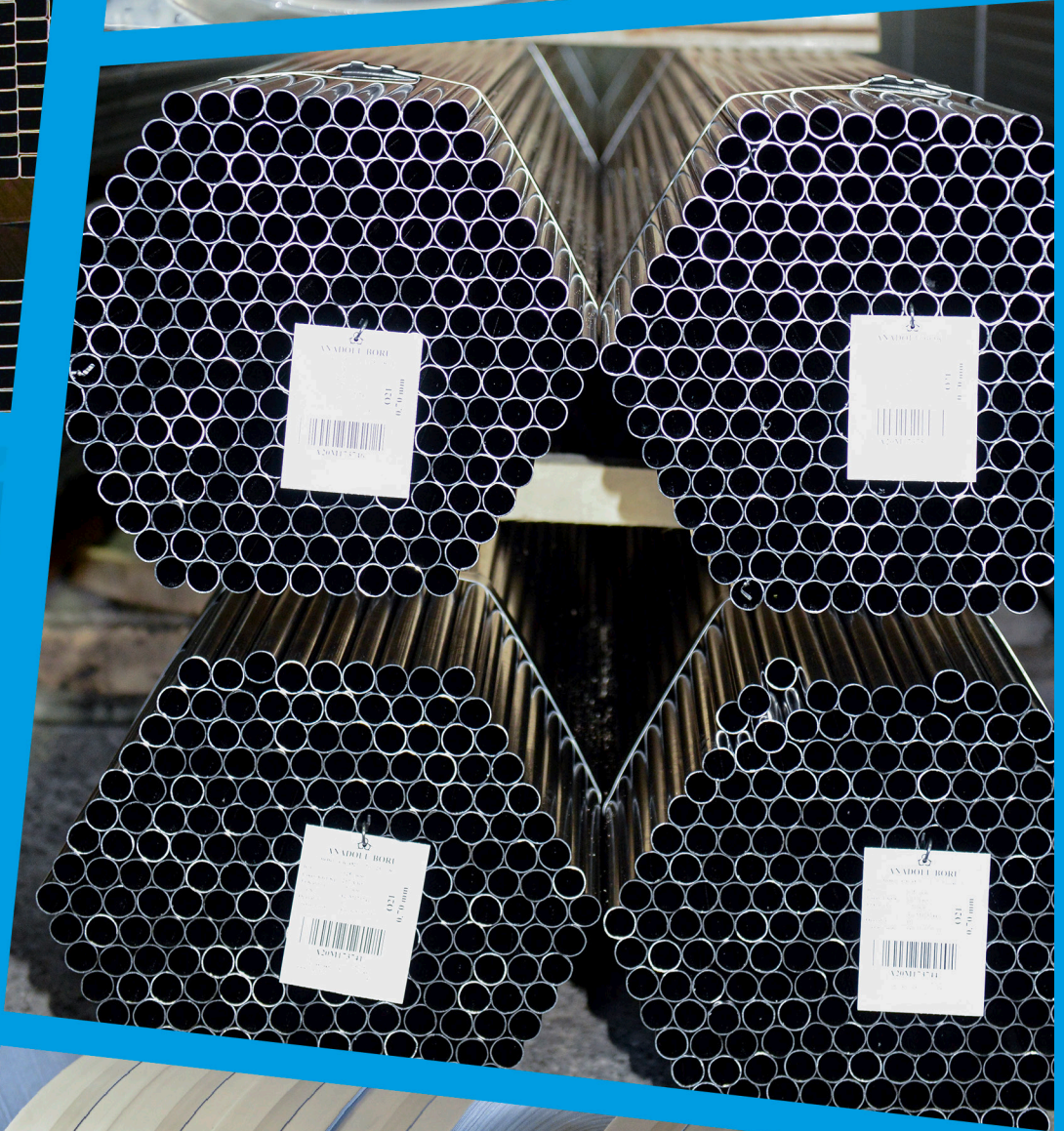
SQUARE TUBES	
DIMENSIONS (mm)	PIECES PER BUNDLE
10x10	256
12,7x12,7	256
15x15	256
16x16	256
20x20	225
25x25	196
30x30	144
35x35	96
40x40	100
50x50	81

RECTANGULAR TUBES	
DIMENSIONS (mm)	PIECES PER BUNDLE
10x20	288
15x20	221
15x25	240
10x30	192
15x30	200
20x25	192
20x30	192
20x40	162
30x40	100
20x50	126
30x50	98
20x60	108
15x65	108
40x60	70

SPECIAL CROSS SECTION TUBES	
DIMENSIONS (mm)	PIECES PER BUNDLE
FLAT OVAL 10x20	288
FLAT OVAL 14x24	240
FLAT OVAL 15x30	240
FLAT OVAL 10x39	192
FLAT OVAL 20x32	192
FLAT OVAL 20x35	192
FLAT OVAL 16x40	162
FLAT OVAL 20x40	162
FLAT OVAL 21x38	162
FLAT OVAL 21x47	162
FLAT OVAL 25x50	98
FLAT OVAL 20x60	108
FLAT OVAL 32x50	98
D LADDER 34x76	60
V LADDER 34x78	60
D PROFILE 10x20	288
D PROFILE 18x25	240
D PROFILE 30x40	100
OCTAGONAL Ø21	250
T TRIANGLE 15x50x60	60









AnadoluBoru

ANADOLU BORU PROFIL NAK. SAN. ve TIC. LTD. STI.

Ankara Yolu 25.km, Beydegirmeni Mah. Beydegirmeni Kume Evler Mevkii No:87 Kocasinan/KAYSERİ

T: +90 352 385 10 28 **F:** +90 352 385 10 07 **M:** info@anadoluboru.com

 www.anadoluboru.com